
Forest inspections

Comments taken from : *Minimum standards governing timber supply and forest management activities*, Société de protection des forêts contre le feu (SOPFEU), Québec, 2008, pages 7 to 9.

Chapter 2 Forest inspections Section 1 Roles

1. ROLE OF THE MEMBER COMPANY

Any member company that carries out or mandates someone to carry out forestry operations (forest management and timber supply activities) must notify SOPFEU by April 30 of every year of its intention to carry out, or not carry out, forestry operations in the months of May, June, July and August (see Appendix 1 of *Minimum standards governing timber supply and forest management activities*).

The member company that declares forestry operations for the abovementioned months must ensure that forest fire prevention standards are respected by conducting monthly inspections and correcting any non-conformities detected. An official declaration to this effect must be made to SOPFEU (see Appendix 2 of *Minimum standards governing timber supply and forest management activities*) and signed in April of each year by a representative of the member, saying that its forestry operations are systematically and rigorously monitored and respect the minimum standards in effect as outlined in Chapter 1 of *Minimum standards governing timber supply and forest management activities*.

When a forest fire occurs or fire threatens the forest due to activities of the member company, this company agrees to notify SOPFEU and, in conjunction with SOPFEU, analyze the situation and if need be, produce a plan of action and follow-up, whose objective will be to prevent the same type of events from reoccurring (Chapter 3 of *Minimum standards governing timber supply and forest management activities*).

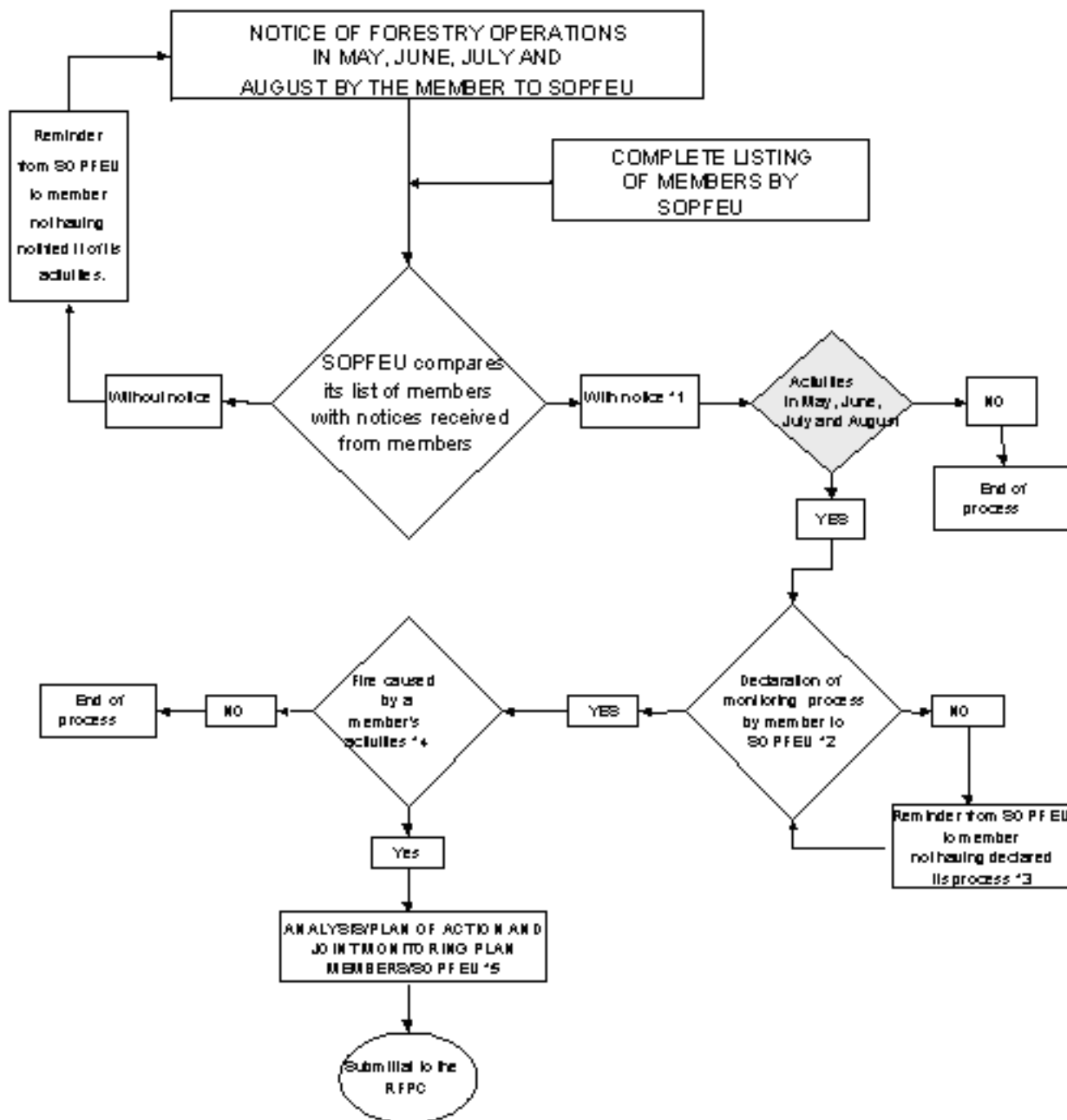
2. ROLE OF SOPFEU

SOPFEU's role consists of ensuring, and informing the Regional Forest Protection Council (RFPC), that the member company has assumed its responsibilities regarding:

- the declaration of its forest management and supply activities;
- its commitment to prevention by conducting inspections and follow-ups;
- the production of an action plan aimed at correcting non-conformities that will have caused a forest fire or threatened the forest.

SOPFEU will support the member company in preparing and following up any plan of action aimed at correcting a situation, in particular by supplying its expertise in prevention and training.

Section 2 Illustration of inspection process



Information collected during the process will be sent annually to the RFPC

- * 1: Number of members carrying out activities in May, June, July or August
- * 2: Number of members with activities having declared an inspection monitoring process
- * 3: Number of members with activities, but not having declared an inspection monitoring process
- * 4: Number of fires started by forestry operations
- * 5: % of fires having been the subject of an analysis, action plan and monitoring measure

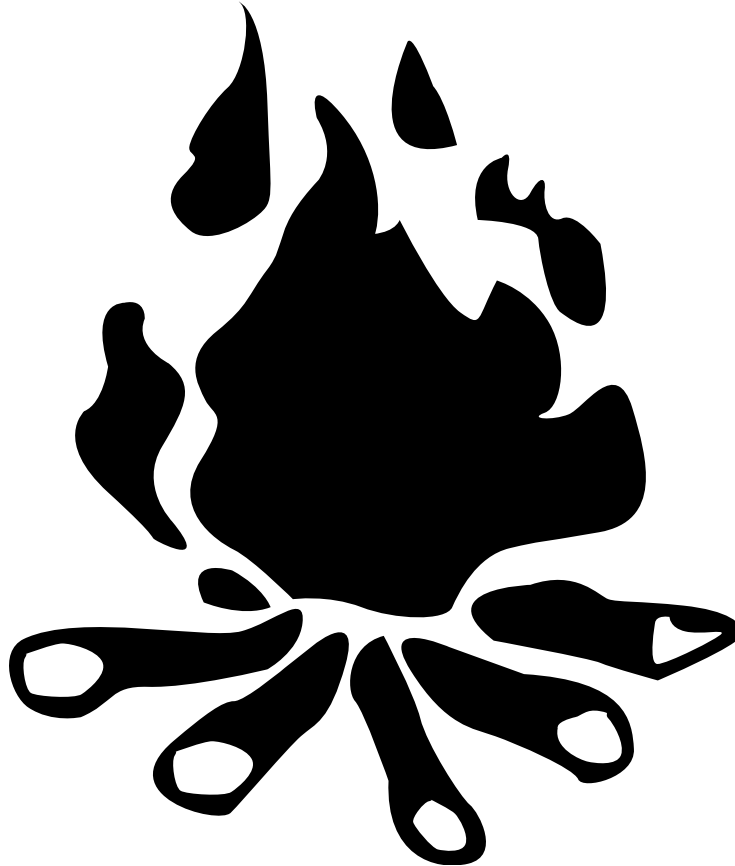
Smokers' articles



**No person may smoke in or near
the forest from April 1 to November 15
while working or travelling,
except in a building or a closed vehicle.**

(From the Loi sur les forêts, article 138)

Campfires for cooking purposes or for repelling mosquitoes



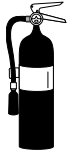
From April 1 to November 15, it is forbidden to make a campfire to cook or repel mosquitoes. *

* From : *Minimum standards governing timber supply and forest management activities*. These are standards adopted by SOPFEU members. Consequently, the standard on campfires for cooking purposes or for repelling mosquitoes applies to members and their subcontractors. Other forest users are not subject to this standard.

Fire extinguishing materials

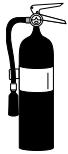
The standards

MOBILE EQUIPMENT



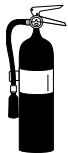
1 kg

Foreman's vehicle and all-terrain vehicle (ATV)



2 kg

Skidder, forwarder, grader, vehicle for hauling (wood, gravel or tree seedlings)



4 kg

Equipment used for bucking, loading or unloading wood or gravel, bulldozer, mechanical shovel



9 kg

Fellers, delimiters and other multi-function machines



2 x 9 kg

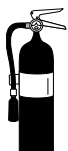
Service truck used in the forest for machinery maintenance

STATIONARY EQUIPMENT



2 kg

Engine power under 75 kw



4 kg

Engine power over 75 kw

Fire extinguisher must be :

- in good working order
- visible
- accessible at all times

PETROLEUM PRODUCTS AND EQUIPMENT

Type of petroleum equipment	Rating
Fuel distribution point (pump) and service truck at a forest camp site.	At least 2 fire extinguishers with an effective total rating of at least 40 BC, one of which must be less than 10 metres away (measured horizontally) from distribution points.
Fuel tanker truck or vehicle transporting fuel for forestry machinery.	A fire extinguisher with an effective rating of at least 20 BC installed near the tanker or mobile tank and a fire extinguisher with an effective rating of at least 5 BC, installed and clearly visible in the truck cab or affixed outside the cab.

Reminder on the use of fire extinguishing material

ALL TYPES OF FIRE EXTINGUISHERS

- Remove the pin from the fire extinguisher
- Press the handle
- Aim at the base of the flames with a sideways movement

POUCH EXTINGUISHER

- Shake the contents of the pouch
- Remove the cap
- Hold the pouch firmly with both hands and scatter its contents at the base of the flames