



## COMPARING WITHOUT ERRING

*Once upon a time there was a hectare...*

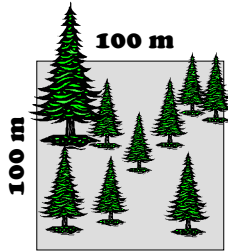
How many hectares in 1 square kilometre ?

Does a football field measure 2 hectares or is it the other way around?

To avoid confusion, here are a few pictures... worth at least a 1 000 words!

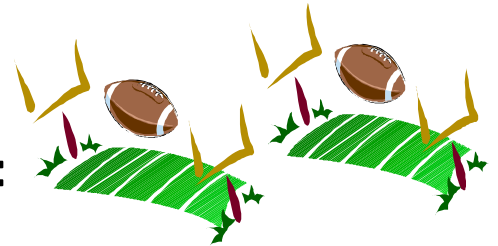
One hectare (ha)

=

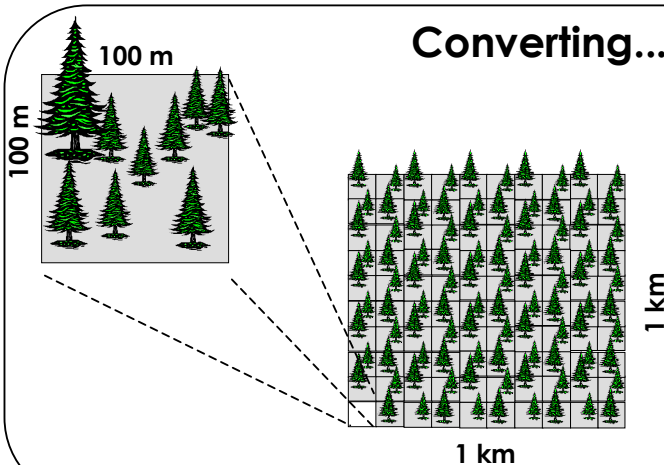


100 metres X 100 metres

=



An area about the size of  
2 football fields



### Converting... nothing is easier!

To convert hectares into km<sup>2</sup> :

- **Divide** by 100

*SOPFEU protects 52,000,000 hectares of forest, or 520,000 km<sup>2</sup>.*

To convert km<sup>2</sup> into hectares :

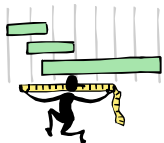
- **Multiply** by 100

*On average, 962 km<sup>2</sup> of forest are destroyed by flames every year in Quebec, or 96,200 ha.*

To convert m<sup>2</sup> into hectares :

- **Divide** by 10,000

*The paved area of the landing strip of a regional airport is 85,000 m<sup>2</sup>, or 8.5 ha.*



And what about an acre? This imperial unit of measurement is no longer used in forest fire protection in Canada. One acre is the equivalent of 0.4 ha.

As for the arpent, it is an agrarian measurement of distance equivalent to 58,47 metres.

## Compare these few areas

Olympic Stadium : **6 ha**

La Ronde : **48 ha**

Plains of Abraham : **108 ha**

Yamaska park : **2,500 ha**

Île aux Coudres : **2,500 ha**

Island of Montreal : **54,200 ha**

Lac Saint-Jean : **96,200 ha**