



## NEED FURTHER INFORMATION?

# Suspension or cancellation of industrial burning permits

### WHO DECIDES?

In Quebec, on territory it protects, the Société de protection des forêts contre le feu (SOPFEU) issues burning permits for industrial purposes when burning is done in or near forested areas. These permits are valid for a specific period of time and must be renewed when they expire. In some cases, a protection plan<sup>1</sup> is required. The costs stemming from supervisory activities prescribed by SOPFEU are assumed by the organization planning the industrial-type burning.

It is also SOPFEU that decides to suspend the issuing of new burning permits and to cancel those already issued. However, this measure only applies to industrial burning. In the case of domestic burning, it can be limited by municipalities, under their own by-laws.

<sup>1</sup>Mandatory plan for any person who carries out or causes work to be carried out in the forest. This plan must be submitted for approval to the Minister in the form and tenor determined by regulation of the Government.

### DOMESTIC OR INDUSTRIAL?

**Domestic burning:** permit issued by the **municipality**, according to legislation in effect

Burning during activities that are not for lucrative purposes

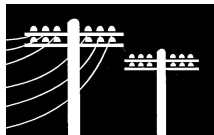


Examples:

- Burning to get rid of forest waste, after clearing residential or recreational land.
- Burning of slash, after clearing land for the construction of a non-commercial building such as house, cottage, shed.
- Campfire, cooking fire, bonfire, fire to keep mosquitoes away.
- Fire to celebrate events such as Quebec's national holiday or Canada Day.
- Fireworks.

**Industrial burning:** permit issued by **SOPFEU**

Burning done in or near forested areas, aimed at getting rid of all trees felled and cut during Clearing for industrial or lucrative purposes.

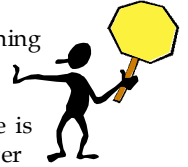


Examples:

- Burning during activities of an industrial nature such as clearing to make way for a road, or clearing along a road, construction of a power transmission line or a building to be used for commercial purposes or to be sold, work to improve watercourses, etc.
- Burning of slash for agricultural purposes that are commercial or industrial in nature.
- Silvicultural burning (heaps of forest waste).
- Burning in blueberry fields.

### WHEN?

Suspending the issuing of an industrial burning permit along with cancelling those already issued is the first preventive measure aimed at minimizing the outbreak of fires. This measure is put in place when an assessment of the fire danger shows that industrial burning can be a threat for the forest. The decision to impose the measure is based both on forest dryness and on current and forecast weather conditions.



### WHERE?

"Suspending and cancelling industrial burning permits" is a measure that may be applied throughout Quebec on both public and private forestland protected by SOPFEU.

**EXCEPTION:** When a protection agreement<sup>2</sup> has been reached between SOPFEU and a town or city, all requests for industrial burning permits in an area protected by the city, are issued by the latter and do not involve SOPFEU.

For all municipalities not having the status of town or city, permits for industrial burning in or near the forest are issued by SOPFEU.

<sup>2</sup>Agreement serving to determine the sectors where SOPFEU will ensure forest protection, within a town or city, when this town or city does not have enough resources to protect large wooded areas.

### IF AN OFFENCE IS COMMITTED...



Under Section 135 of the Forest Act: "No person may start a fire in or near the forest from 1 April to 15 November unless he holds a permit issued by a fire-ranger for that purpose...The fire-ranger shall determine, when issuing a permit, the precautions to be taken in the specific circumstances of each permit application. He shall issue the permit on the conditions determined by regulation of the Government."

In addition, under Section 185 of the Forest Act: "The following persons are guilty of an offence and are liable to a fine of \$500 to \$50,000... every person who contravenes the first paragraph of section 135 or fails to comply with the precautions determined by the fire-ranger when issuing a permit." As a result, when SOPFEU suspends the issuing of an industrial burning permit and cancels those already issued, applicants must extinguish the fire for which they obtained a permit. In the event this preventive measure is not respected, the person contravenes the law and, in doing so, is liable to a fine as previously stated.

Information sheet for  
local municipalities